

SAN DIEGO

COMIC CON

VOL. 02

THE CRUISE

THE ULTIMATE FAN ADVENTURE™

CAPTAIN TOUCAN'S CRUISE TIPS!



JAN 30TH - FEB 3RD, 2026

TAMPA • NASSAU

SAILING ON CELEBRITY
CONSTELLATION

Official licensee of Comic-Con® International

AHOY, FANS!

ARE YOU READY TO TAKE YOUR
COMIC-CON® EXPERIENCE TO THE
HIGH SEAS?

Welcome aboard **Comic-Con: The Cruise**, The Ultimate Fan Adventure™! Each day is packed with live performances, celebrities and creators, over-the-top game shows, cosplay, trivia battles, themed parties, and meetups where you can connect with fellow fans who geek out just as hard as you do. The ship is transformed into a nonstop celebration of fandom, films, comics, TV, books, gaming, and pop culture. So, pack your costumes, sharpen your trivia skills, charge up your sonic screwdrivers, and get ready to sail into a world where you'll find adventure on every deck, and epic events every night.



IT'S MORE THAN A
CRUISE—IT'S AN ALL-ACCESS,
ULTIMATE COMIC-CON
FAN ADVENTURE!



BANG

ONCE ON BOARD

Once you board the ship, feel free to explore, hang by the pool or grab a beverage of your choice! Your cabin will be available around 2:00 PM ET. Once inside your cabin, you will find your Celebrity SeaPass Card, which serves many purposes including your cabin key, charge card for onboard purchases, entry into the Celebrity Theater, and boarding pass for entering and exiting the ship in various ports of call. It is important to keep your SeaPass Card with you at all times.

Each night the Celebrity Theater is the place to be with incredible shows and performances. To accommodate all guests, many shows are offered twice nightly, with entry based on SeaPass Card color. This ensures everyone has the chance to enjoy every performance.

Celebrity Theater Show Times

Guests with **Blue SeaPass Cards** attend the 1st show (6:30 PM)

Guests with **Red SeaPass Cards** attend the 2nd show (9:00 PM)

Please Note:

- You must attend at your assigned show time. Entry will not be permitted at the other show.
- SeaPass Cards are checked at all theater entrances.
- All other shows and performances are open seating, unless noted otherwise.

THEME NIGHTS

Each night's theme sets the stage for all-day show-stopping cosplay and events. Whether you're a die-hard fan who makes intricate and reproduction-quality costumes, or you are just looking to have some fun, you won't want to miss the chance to dress up and take part in the festivities.

CAPTAIN TOUCAN'S SAIL-ABRATION

NIGHT 1 | FRIDAY, JANUARY 30TH

Anchors aweigh, superfans—Join Captain Toucan and kick off *Comic-Con: The Cruise* with a night of nautical nonsense and high seas heroics! What would your favorite pop culture character wear during a legendary nautical adventure? Picture superheroes in yacht wear, space rogues surfing the Milky Way in eye patches, enchanted sea creatures sporting glowing amulets, or slippery villains plotting mischief on the pool deck. From subtle sea-worthy anchor-print tees and maritime medallions to full-on cosplay fit to lead a comic book regatta, this is your night to let fly your fandom flag high and chart a course for fun.



ZAPP!

COMIC-CON: THE CRUISE CELEBRATES FANTASY

NIGHT 2 | SATURDAY, JANUARY 31ST

Step into a realm of magic, myth, and epic quests as *Comic-Con: The Cruise Celebrates Fantasy*! On this enchanted night, our floating kingdom will be filled with roaming wizards, stirring dragons, and rising heroes. Will you don your house robes and cast a spell? Slip on a ring and join a Fellowship of new friends? Or will you just roll the dice and see where the night takes you? From enchanted forests to royal courts, from Middle-earth to Ministries of Magic, it's your night to celebrate your favorite legendary looks and mythical worlds.

Prepare for a night of fantastical festivities and adventure—because on this night, you are all the chosen ones.



COLOSSAL COSPLAY CELEBRATION

NIGHT 3 | SUNDAY, FEBRUARY 1ST

This is THE night to unleash your creativity and dress as your favorite characters from movies, shows, books, games, mashup of multiverses, or as your very own original creation! EVERYONE is invited to show off their creations and take a turn in the spotlight during the Colossal Cosplay Catwalk. But Wait...There's More!

Fans whose cosplay is at least 70% handmade are invited to enter the Colossal Cosplay Contest to be professionally judged by *Comic-Con: The Cruise's* cosplay experts Yaya Han, CutiePieSensei, and Cowbutt Crunchies! And yes, there will be prizes!

Whether you're in an elaborate handmade outfit, a store-bought costume, or a fun t-shirt, you're invited to see and be seen repping your fandom for the most Colossal Cosplay Celebration at sea!

Visit ComicConTheCruise.com/Colossal-Cosplay-Contest-Rules/ for full contest details and official rules.

WHAM!



PAJAMA-CON: WHERE YOUR POP CULTURE DREAMS COME TO LIFE

NIGHT 4 | MONDAY, FEBRUARY 2ND

It's time to dream big, and dress comfy for a comic slumber party like no other! Come to a place between fantasy and reality (and between the sheets), where the capes double as blankets, onesies are funzies, and conflicts are solved with pillows. You can hit the dance floor with heroic moves, enjoy a nightcap, and cozy up with fellow fans for a movie night. Whatever you do, don't sleep on the idea of repping your best fandom jam-jams!

IMPORTANT

COSPLAY INFORMATION:

We're delighted to welcome every creative and passionate cosplay guest aboard *Comic-Con: The Cruise*! To ensure a safe and enjoyable experience for everyone, please read and adhere to the following guidelines:

CONDUCT AND SAFETY

- Cosplay is not consent. Respect other guests' personal space and do not engage in unwelcomed physical contact.
- Always ask for permission before photographing or recording a cosplayer.
- All costumes must be family-friendly. Offensive, overly revealing or inappropriate attire is not permitted.

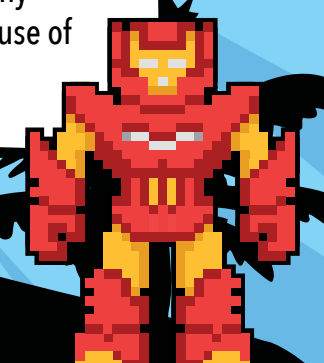
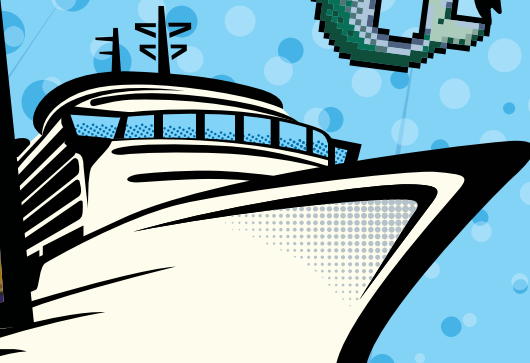


WEAPONS AND PROPS

- All guests will proceed through airport style security prior to boarding the ship. Therefore, full face make-up and prosthetics are not permitted while boarding.
- Real weapons, sharp objects, or any items deemed dangerous are strictly prohibited and may be confiscated.
- Projectile weapons (airsoft guns, nerf guns) must be non-functional and unable to discharge any projectiles.
- Prop weapons must be made of lightweight materials such as foam, plastic or wood. Metal props are not allowed.
- Modern, realistic-looking weapons must have a prominent orange tip.

RESPONSIBILITY

Guests are responsible for their own costumes and props. *Comic-Con: The Cruise* is not liable for any damage, loss, or injury resulting from the use of cosplay costumes and props.



CELEBRITY CONSTELLATION

Hey fans! Get ready to give your taste buds a power boost aboard the Celebrity Constellation! From second breakfasts and elevenses, super-sized slices and late-night bites worthy of the halls of Asgard, you'll find everything from comfort food classics to bold cinematic snacks, super-powered dinners, legendary desserts, and dishes so fresh they deserve their own origin story.

INCLUDED DINING OPTIONS

SAN MARCO RESTAURANT

Every meal in the San Marco Restaurant is like an ultimate cross-over comic book event—one page offers a look at a new global adventure, while the next seamlessly explores fan-favorite classics. By day, it's the perfect setting for brunch, bottomless mimosas, and swapping headcanon theories with your crew. By night, the space—and the vibe—levels up into a multi-stage dining event where every course explodes like a splash page with spicy, bold, and unforgettable flavors.

OCEANVIEW CAFÉ

The Oceanview Café is your Chaotic Good all-day variety-filled hub that will keep you rolling from early morning to late night! Start your fun-packed day with a freshly made omelet, dig into a lunch or dinner of stir-fries, juicy burgers, pasta, and vegetarian and vegan specialties, and then fuel your late night partying and gaming marathons with nachos, sweet treats, and more. With better ocean views than any convention center food court, you may never want to eat anywhere else!

POOL GRILL

The perfect poolside place to refuel and refresh between panels, workshops, your Spells and Defense Against the Dark Arts classes, or RPG campaigns, the panoramic views and chill top-deck vibe of the Pool Grill is your go-to pit stop for keeping your energy high between panels, parties, games, and fandom fun!



SLAM!

SPECIALTY DINING OPTIONS

ADDITIONAL FEES APPLY,
RESERVATIONS RECOMMENDED.

Reserve your dining experiences NOW through Celebrity's Pre-Cruise Planner. Visit CelebrityCruises.com/Account/Signin to book.

LE PETIT CHEF® AT QSINE

Looking for an animated dining experience? Your tabletop comes to life at Le Petit Chef. By using innovative technology created by Skullmapping, an animated character appears beside your plate before each course to prepare the dish you'll be enjoying. Be sure to experience this immersive, mind-blowing mashup of entertainment and dining!

SUSHI ON FIVE

Wear your best Namor and Aquaman cosplay and roll for Deliciousness, because you're sure to be a super fan of Sushi on Five! Curated by expert restaurateur and sushi master Yoshikazu "Yoshi" Okada, the menu is a blockbuster lineup of Japanese specialties. Roll with bold, hand-crafted sushi and nigiri—tuna, shrimp, eel, and more—or keep it classic with sashimi favorites like salmon, yellowtail, and octopus. Every dish is as fresh and precise as an artist's first sketch in Artists' Alley.



TUSCAN GRILLE

Deserving of its own main stage panel, Tuscan Grille is where rustic Italian tradition meets modern flair. Expect handmade pastas, artisanal salumi, fresh seafood, butcher's cuts, and USDA Prime dry-aged steaks—all plated with contemporary style. It's Italian cuisine reimagined, delivering flavors as iconic as your favorite franchise.



OMG!

PREPARING FOR YOUR CRUISE

LOCATE YOUR PASSPORT!

Think of your passport as the Elvish phrase you need to have to enter Moria—you cannot board the ship on Embarkation Day without it!

Locate your Passport NOW and make sure the expiration date is not before August 3, 2026—that's 6 months AFTER our sailing. If you are a U.S. Citizen and do not have a passport, you may travel with an original birth certificate and valid state ID. PLEASE NOTE – the original birth certificate must include a raised seal and the name on the state ID must match the birth certificate. Non-U.S. Citizens should verify the required documentation by visiting the **Booked Guests** Portal on **ComicConTheCruise.com** for more information.



GETTING TO TAMPA, FLORIDA

Unless you reside near Tampa, FL., we recommend you arrive to the area at least one day prior to Embarkation Day via plane, car, giant eagle, Apparition spell, or TARDIS. Once you arrive in the area, you will be responsible for arranging transportation to the cruise port. Uber, Lyft and taxi services are readily available and offer affordable transportation from nearby airports and/or hotels.

Boarding on January 30, 2026, typically begins around 11:00 AM ET. When you complete your Online Check-In (45 Days prior to the sailing), you will select a Terminal Arrival Time. To avoid delays and congestion, PLEASE DO NOT ARRIVE TO THE TERMINAL BEFORE YOUR SELECTED ARRIVAL TIME.

LEAVING FROM TAMPA, FLORIDA

Once the ship arrives back in Tampa, on February 3, 2026, U.S. Customs and Border Protection will perform an inspection. After the ship has been cleared, you will be allowed to disembark. Due to the time it takes to clear the ship, we recommend booking return flights after 12:00 PM ET on Disembarkation Day. Uber, Lyft and taxi services are readily available and offer affordable transportation to nearby airports.

PURCHASE TRAVEL INSURANCE

Like an orc waiting to spring into action, travel delays, missing Bagginses—we mean baggage—and other perils can test even the most seasoned traveler. And since mithril seems to be in short supply, you might want to consider travel insurance to help protect you from what may come your way during your journey. Remember, your reservation payments are non-refundable. And though insurance may be purchased up to 48 hours prior to sailing, you should consider getting it as soon as possible to secure the broadest coverage possible. For more information on travel insurance, contact an Reservation Specialist at **877.438.9092** or visit the **Booked Guests** Portal on **ComicConTheCruise.com**.



WHAT'S NEXT?

Celebrity's Pre-Cruise Planner is the place to plan your cruise while getting the most of your travel adventure. Securing reservations and purchasing cruise package deals before you sail lets you score the best savings! From specialty dining, to shore excursions and spa appointments, check out all Celebrity has to offer! Visit **CelebrityCruises.com/Account/Signin** to log in or create your account.

45 Days prior to the sailing, we will provide you with instructions via email (not owl) on how to complete Celebrity's Online Check-In. Once your online check-in is complete, you can print your "Xpress Pass," which acts as your boarding pass for Embarkation Day. If you do not complete your online check-in prior to the sailing, you may face substantial delays inside the cruise terminal on Embarkation Day.

30 Days prior to the sailing, we will provide you with email instructions on how to print your Celebrity Luggage Tags. These tags should be affixed to all pieces of your luggage the morning of embarkation.

REGISTER FOR ACCESSIBLE SEATING

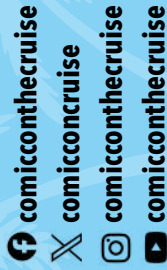
Guests with mobility issues may register to be seated in the accessible section, located in the rear of the Celebrity Theater, for each evening's Main Show. To register, visit the **Booked Guests** Portal on **ComicConTheCruise.com** and click **ACCESSIBLE CRUISING**.



CONTACTING ECP

Our dedicated Reservation Specialists are standing by to help answer any questions you may have. Contact Alan or Jerry at **877.438.9092** Monday-Thursday 9 AM - 5 PM CT and Friday 9 AM - 4 PM CT, or email info@comicconthecruise.com.

FOLLOW US



© 2025, *Comic-Con: The Cruise*. All rights reserved.

Comic-Con® and the Comic-Con® logo are registered trademarks of San Diego Comic Convention.



Entertainment Cruise Productions
120 S. Central Ave. Suite #135
St. Louis, MO 63105

FIRST CLASS PRESORT
U.S. POSTAGE PAID
SAINT LOUIS, MO
PERMIT 5709

